

**SUBMITTAL DATA: MXZ-5B42NA**  
**MULTI-INDOOR INVERTER HEAT PUMP SYSTEM**

Job Name:	Location:	Date:
Purchaser:	Engineer:	
Submitted to:	For <input type="checkbox"/> Reference <input type="checkbox"/> Approval <input type="checkbox"/> Construction	
System Designation:	Schedule No.:	

**GENERAL FEATURES**

- Compact side discharge outdoor unit
- Wireless or wired remote controller, indoor unit dependent
- Quiet operation
- Automatic fan speed control
- Auto restart following power outage
- Self-check function—integrated diagnostics
- Advanced microprocessor control
- Limited warranty: five years parts and seven years compressors



Outdoor Unit: MXZ-5B42NA



**ACCESSORIES**

- Air Outlet Guide (MAC-857SG)
- 3/8" x 1/2" Port Adapter (MAC-A454JP-E)
- 1/2" x 3/8" Port Adapter (MAC-A455JP-E)
- 1/2" x 5/8" Port Adapter (MAC-A456JP-E)
- 1/4" x 3/8" Port Adapter (PAC-493PI)
- 3/8" x 5/8" Port Adapter (PAC-SG76RJ-E)

Specifications			Model Name
<b>Unit Type</b>			<b>MXZ-5B42NA</b>
<b>Cooling*</b> (Non-ducted / Ducted)	Rated Capacity	Btu/h	40,800 / 37,200
	Maximum Capacity	Btu/h	43,000 / 41,000
	Total Input	W	4,800 / 3,960
<b>Heating at 47° F*</b> (Non-ducted / Ducted)	Rated Capacity	Btu/h	45,200 / 41,200
	Maximum Capacity	Btu/h	53,600 / 51,600
	Total Input	W	3,780 / 3,660
<b>Heating at 17° F*</b> (Non-ducted/Ducted)	Rated Capacity	Btu/h	30,500 / 31,100
	Rated Total Input	W	2,930 / 2,850
<b>Electrical Requirements</b>	Power Supply	Voltage, Phase, Hertz	208 / 230V, 1-Phase, 60 Hz
	Recommended Fuse/Breaker Size	A	40
	MCA	A	36.2
<b>Voltage</b>	Indoor - Outdoor S1-S2	V	AC 208 / 230
	Indoor - Outdoor S2-S3	V	DC ±24
<b>Compressor</b>			DC Inverter-driven Twin Rotary
<b>Fan Motor (ECM)</b>		F.L.A.	1.90
<b>Sound Pressure Level</b> (Non-ducted/Ducted)	Cooling	dB(A)	58
	Heating	dB(A)	58
<b>External Dimensions (H x W x D)</b>		In. / mm	42-1/8 x 35-7/16 x 12-19/32 / 1070 x 900 x 320
<b>Net Weight</b>		Lbs. / kg	192 (87)
<b>External Finish</b>			Munsell 3.0Y 7.8/1.1
<b>Refrigerant Pipe Size O.D. — Four Ports</b>	Liquid (High Pressure)	(In. / mm)	1/4 / 6.35
	Gas (Low Pressure)		A: 1/2 / 12.7; B,C,D,E: 3/8 / 9.52
<b>Max. Refrigerant Line Length</b>		Ft.	262
<b>Max. Piping Length for Each Indoor Unit</b>		Ft.	82
<b>Max. Refrigerant Pipe Height Difference</b>	If Indoor Unit is Above Outdoor Unit	Ft.	49
	If Indoor Unit is Below Outdoor Unit		33
<b>Connection Method</b>			Flared
<b>Refrigerant</b>			R410A

(For data on specific indoor units, see the MXZ-B Technical and Service Manual.)

\* Rating Conditions per AHRI Standard:

Cooling | Indoor: 80° F (27° C) DB / 67° F (19° C) WB  
Cooling | Outdoor: 95° F (35° C) DB / 75° F (24° C) WB

Heating at 47° F | Indoor: 70° F (21° C) DB / 60° F (16° C) WB  
Heating at 47° F | Outdoor: 47° F (8° C) DB / 43° F (6° C) WB

Heating at 17° F | Indoor: 70° F (21° C) DB / 60° F (16° C) WB  
Heating at 17° F | Outdoor: 17° F (-8° C) DB / 15° F (-9° C) WB

# SPECIFICATIONS : MXZ-5B42NA, contd.

**Operating Range:**

		Indoor Intake Air Temp.	Outdoor Intake Air Temp.
Cooling	Maximum	95° F (35° C) DB 71° F (22° C) WB	115° F (46° C) DB
	Minimum	67° F (19° C) DB 57° F (14° C) WB	14° F (-10° C) DB
Heating	Maximum	80° F (27° C) DB 67° F (19° C) WB	75° F (24° C) DB 65° F (18° C) WB
	Minimum	70° F (21° C) DB 60° F (16° C) WB	6° F (-14° C) DB 5° F (-15° C) WB

**Energy Efficiencies:**

Indoor Unit Type	SEER	EER	HSPF	COP @ 47° F	COP @ 17° F
<b>Non-ducted (06+09+09+09+09)</b>	18.4	8.5	9.8	3.50	2.44
<b>Ducted and Non-ducted</b>	16.45	8.95	9.25	3.40	2.48
<b>Ducted (09+09+09+09+09)</b>	14.5	9.4	8.7	3.3	2.52

**Multi-zone Indoor/Outdoor Combination Table**

	MSZ-FE*	MSZ-GE*	MFZ*	SEZ*	SLZ*	PCA (A24)*	PLA (A12/18/24)*	PEAD (A24)*
<b>MXZ-5B42NA</b>	OK	OK	OK	OK	OK	24OK	18, 24 OK 12 NO	24 OK

\* Refer to indoor unit submittal.

**Notes:**

- Minimum of two Indoor Units must be connected to the MXZ-5B42NA.
- Minimum installed capacity cannot be less than 12,000 Btu/h.
- There are NO indoor units larger than 24,000 Btu/h that can be connected to MXZ Systems.
- PLA-A12BA can NOT be connected with MXZ-2B20-1/MXZ-3B24-1/MXZ-3B30-1/MXZ-4B36-1/MXZ-5B42NA.
- System can operate with only one Indoor Unit turned on. (see Operation Performance Table next page for single Indoor Unit performance).
- May connect to any style indoor unit or combination.
- Information provided at 208/230V. Refer to the MXZ Outdoor Unit Service Manual for detailed specifications and additional information per Indoor Unit Combination.

Notes:

# MXZ-5B42NA OPERATION PERFORMANCE

Operation Performance for Indoor Unit Combinations (Unit A + Unit B + Unit C + Unit D + Unit E)	Cooling Capacity Range (Btu/h)						Power Usage Range (W)
	Heating Capacity Range (Btu/h)						
	Unit A	Unit B	Unit C	Unit D	Unit E	Total Range	
6	6,500	-	-	-	-	5,200 - 6,500	860 - 880
	7,800	-	-	-	-	6,800 - 14,400	860 - 1,210
9	9,000					7,200 - 9,000	890 - 910
	10,900					8,600 - 15,400	940 - 1,340
12	12,000					7,200 - 12,000	890 - 970
	14,400					8,600 - 16,400	940 - 1,490
15	14,000					7,200 - 14,000	890 - 1,040
	18,000					8,600 - 21,100	940 - 2,480
18	17,200					7,200 - 17,200	890 - 1,520
	21,600					8,600 - 24,900	940 - 3,610
24	22,000					7,200 - 22,000	810 - 1,790
	23,200					8,600 - 27,800	830 - 2,290
6 + 6	6,500	6,500				12,000 - 13,000	930 - 0,970
	7,800	7,800				11,000 - 31,000	750 - 2,570
6 + 9	6,200	9,300				12,000 - 15,500	930 - 1,210
	7,500	11,300				11,000 - 31,000	750 - 2,570
6 + 12	6,200	12,400				12,000 - 18,500	930 - 1,550
	7,400	14,800				11,000 - 31,000	750 - 2,570
6 + 15	5,900	14,700				12,000 - 20,500	930 - 1,830
	7,400	18,500				11,000 - 33,000	750 - 2,810
6 + 18	6,000	17,800				12,000 - 23,700	930 - 2,450
	6,800	20,300				11,000 - 35,000	750 - 2,930
6 + 24	5,200	20,800				12,000 - 26,000	930 - 2,810
	5,400	21,600				11,000 - 35,000	750 - 2,870
9 + 9	9,000	9,000				12,000 - 18,000	930 - 1,490
	10,900	10,900				11,000 - 31,000	750 - 2,570
9 + 12	9,000	12,000				12,000 - 21,000	930 - 1,950
	10,900	14,500				11,000 - 33,000	750 - 2,810
9 + 15	8,700	14,400				12,000 - 23,000	930 - 2,510
	10,200	16,900				11,000 - 35,000	750 - 2,930
9 + 18	8,700	17,400				12,000 - 26,000	930 - 2,810
	9,000	18,000				11,000 - 35,000	750 - 2,930
9 + 24	7,700	20,400				12,000 - 28,000	930 - 3,210
	7,400	19,700				11,000 - 35,000	750 - 2,750
12 + 12	12,000	12,000				12,000 - 24,000	930 - 2,510
	13,500	13,500				11,000 - 35,000	750 - 2,930
12 + 15	11,600	14,500				12,000 - 26,000	930 - 2,810
	12,000	15,000				11,000 - 35,000	750 - 2,870
12 + 18	10,400	15,600				12,000 - 26,000	930 - 2,810
	10,800	16,200				11,000 - 35,000	750 - 2,870
12 + 24	9,400	18,700				12,000 - 28,000	930 - 3,210
	9,000	18,000				11,000 - 35,000	750 - 2,750
15 + 15	13,000	13,000				12,000 - 26,000	930 - 2,810
	13,500	13,500				11,000 - 35,000	750 - 2,810
15 + 18	11,900	14,200				12,000 - 26,000	930 - 2,810
	12,300	14,800				11,000 - 35,000	750 - 2,810
15 + 24	10,800	17,300				12,000 - 28,000	930 - 3,210
	10,400	16,700				11,000 - 35,000	750 - 2,810
18 + 18	13,000	13,000				12,000 - 26,000	930 - 2,810
	13,500	13,500				11,000 - 35,000	750 - 2,810
18 + 24	12,000	16,000				12,000 - 28,000	930 - 3,210
	11,600	15,500				11,000 - 35,000	750 - 2,810
24 + 24	15,000	15,000				12,000 - 30,000	930 - 3,230
	13,500	13,500				11,000 - 35,000	750 - 2,810
6 + 6 + 6	6,500	6,500	6,500			12,600 - 19,500	1,010 - 1,610
	7,800	7,800	7,800			11,400 - 36,000	750 - 2,830
6 + 6 + 9	6,300	6,300	9,500			12,600 - 22,000	1,010 - 1,770
	7,600	7,600	11,400			11,400 - 36,000	750 - 2,830

# MXZ-5B42NA OPERATION PERFORMANCE, contd.

Operation Performance for Indoor Unit Combinations (Unit A + Unit B + Unit C + Unit D + Unit E)	Cooling Capacity Range (Btu/h)					Power Usage Range (W)	
	Heating Capacity Range (Btu/h)						
	Unit A	Unit B	Unit C	Unit D	Unit E		Total Range
6 + 6 + 12	6,300	6,300	12,500			12,600 - 25,000	1,010 - 2,240
	7,500	7,500	15,000			11,400 - 36,000	750 - 2,830
6 + 6 + 15	6,000	6,000	15,000			12,600 - 27,000	1,010 - 2,540
	7,200	7,200	18,000			11,400 - 36,000	750 - 2,830
6 + 6 + 18	6,100	6,100	18,200			12,600 - 30,200	1,010 - 3,110
	6,500	6,500	19,500			11,400 - 36,000	750 - 2,830
6 + 6 + 24	5,400	5,400	21,400			12,600 - 32,100	1,010 - 3,510
	5,400	5,400	21,600			11,400 - 36,000	750 - 2,830
6 + 9 + 9	6,200	9,200	9,200			12,600 - 24,500	1,010 - 2,240
	7,400	11,100	11,100			11,400 - 36,000	750 - 2,830
6 + 9 + 12	6,200	9,200	12,300			12,600 - 27,500	1,010 - 2,650
	7,200	10,800	14,400			11,400 - 36,000	750 - 2,830
6 + 9 + 15	5,900	8,900	14,800			12,600 - 29,500	1,010 - 3,000
	6,500	9,800	16,200			11,400 - 36,000	750 - 2,830
6 + 9 + 18	5,900	8,800	17,600			12,600 - 32,100	1,010 - 3,510
	5,900	8,900	17,700			11,400 - 36,000	750 - 2,830
6 + 9 + 24	5,000	7,500	19,800			12,600 - 32,100	1,010 - 3,510
	5,000	7,500	20,000			11,400 - 36,000	750 - 2,830
6 + 12 + 12	6,100	12,200	12,200			12,600 - 30,500	1,010 - 3,160
	6,500	13,000	13,000			11,400 - 36,000	750 - 2,830
6 + 12 + 15	5,900	11,700	14,600			12,600 - 32,100	1,010 - 3,510
	5,900	11,800	14,800			11,400 - 36,000	750 - 2,830
6 + 12 + 18	5,400	10,700	16,100			12,600 - 32,100	1,010 - 3,510
	5,400	10,800	16,200			11,400 - 36,000	750 - 2,830
6 + 12 + 24	4,600	9,200	18,400			12,600 - 32,100	1,010 - 3,510
	4,700	9,300	18,600			11,400 - 36,000	750 - 2,830
6 + 15 + 15	5,400	13,400	13,400			12,600 - 32,100	1,010 - 3,510
	5,400	13,500	13,500			11,400 - 36,000	750 - 2,830
6 + 15 + 18	5,000	12,400	14,900			12,600 - 32,100	1,010 - 3,510
	5,000	12,500	15,000			11,400 - 36,000	750 - 2,830
6 + 15 + 24	4,300	10,700	17,200			12,600 - 32,100	1,010 - 3,510
	4,400	10,800	17,300			11,400 - 36,000	750 - 2,830
6 + 18 + 18	4,600	13,800	13,800			12,600 - 32,100	1,010 - 3,510
	4,700	13,900	13,900			11,400 - 36,000	750 - 2,830
6 + 18 + 24	4,100	12,100	16,100			12,600 - 32,100	1,010 - 3,510
	4,100	12,200	16,200			11,400 - 36,000	750 - 2,830
9 + 9 + 9	9,000	9,000	9,000			12,600 - 27,000	1,010 - 2,540
	10,800	10,800	10,800			11,400 - 36,000	750 - 2,830
9 + 9 + 12	9,000	9,000	12,000			12,600 - 30,000	1,010 - 3,280
	9,800	9,800	13,000			11,400 - 36,000	750 - 2,830
9 + 9 + 15	8,800	8,800	14,600			12,600 - 32,000	1,010 - 3,510
	8,900	8,900	14,800			11,400 - 36,000	750 - 2,830
9 + 9 + 18	8,100	8,100	16,100			12,600 - 32,100	1,010 - 3,510
	8,100	8,100	16,200			11,400 - 36,000	750 - 2,830
9 + 9 + 24	6,900	6,900	18,400			12,600 - 32,100	1,010 - 3,510
	7,000	7,000	18,600			11,400 - 36,000	750 - 2,830
9 + 12 + 12	8,800	11,700	11,700			12,600 - 32,100	1,010 - 3,510
	8,900	11,800	11,800			11,400 - 36,000	750 - 2,830
9 + 12 + 15	8,100	10,700	13,400			12,600 - 32,100	1,010 - 3,510
	8,100	10,800	13,500			11,400 - 36,000	750 - 2,830
9 + 12 + 18	7,500	9,900	14,900			12,600 - 32,100	1,010 - 3,510
	7,500	10,000	15,000			11,400 - 36,000	750 - 2,830
9 + 12 + 24	6,500	8,600	17,200			12,600 - 32,100	1,010 - 3,510
	6,500	8,700	17,300			11,400 - 36,000	750 - 2,830
9 + 15 + 15	7,500	12,400	12,400			12,600 - 32,100	1,010 - 3,510
	7,500	12,500	12,500			11,400 - 36,000	750 - 2,830
9 + 15 + 18	6,900	11,500	13,800			12,600 - 32,100	1,010 - 3,510
	7,000	11,600	13,900			11,400 - 36,000	750 - 2,830
9 + 15 + 24	6,100	10,100	16,100			12,600 - 32,100	1,010 - 3,510
	6,100	10,200	16,200			11,400 - 36,000	750 - 2,830

# MXZ-5B42NA OPERATION PERFORMANCE, contd.

Operation Performance for Indoor Unit Combinations (Unit A + Unit B + Unit C + Unit D + Unit E)	Cooling Capacity Range (Btu/h)					Power Usage Range (W)	
	Heating Capacity Range (Btu/h)						
	Unit A	Unit B	Unit C	Unit D	Unit E	Total Range	
9 + 18 + 18	6,500	12,900	12,900			12,600 - 32,100	1,010 - 3,510
	6,500	13,000	13,000			11,400 - 36,000	750 - 2,830
9 + 18 + 24	5,700	11,400	15,200			12,600 - 32,100	1,010 - 3,510
	5,800	11,500	15,300			11,400 - 36,000	750 - 2,830
12 + 12 + 12	10,700	10,700	10,700			12,600 - 32,100	1,010 - 3,510
	10,800	10,800	10,800			11,400 - 36,000	750 - 2,830
12 + 12 + 15	9,900	9,900	12,400			12,600 - 32,100	1,010 - 3,510
	10,000	10,000	12,500			11,400 - 36,000	750 - 2,830
12 + 12 + 18	9,200	9,200	13,800			12,600 - 32,100	1,010 - 3,510
	9,300	9,300	13,900			11,400 - 36,000	750 - 2,830
12 + 12 + 24	8,100	8,100	16,100			12,600 - 32,100	1,010 - 3,510
	8,100	8,100	16,200			11,400 - 36,000	750 - 2,830
12 + 15 + 15	9,200	11,500	11,500			12,600 - 32,100	1,010 - 3,510
	9,300	11,600	11,600			11,400 - 36,000	750 - 2,830
12 + 15 + 18	8,600	10,700	12,900			12,600 - 32,100	1,010 - 3,510
	8,700	10,800	13,000			11,400 - 36,000	750 - 2,830
12 + 15 + 24	7,600	9,500	15,200			12,600 - 32,100	1,010 - 3,510
	7,700	9,600	15,300			11,400 - 36,000	750 - 2,830
12 + 18 + 18	8,100	12,100	12,100			12,600 - 32,100	1,010 - 3,510
	8,100	12,200	12,200			11,400 - 36,000	750 - 2,830
15 + 15 + 15	10,700	10,700	10,700			12,600 - 32,100	1,010 - 3,510
	10,800	10,800	10,800			11,400 - 36,000	750 - 2,830
15 + 15 + 18	10,100	10,100	12,100			12,600 - 32,100	1,010 - 3,510
	10,200	10,200	12,200			11,400 - 36,000	750 - 2,830
15 + 18 + 18	9,500	11,400	11,400			12,600 - 32,100	1,010 - 3,510
	9,600	11,500	11,500			11,400 - 36,000	750 - 2,830
6 + 6 + 6 + 6	6,500	6,500	6,500	6,500		12,600 - 26,000	1,010 - 2,090
	7,800	7,800	7,800	7,800		11,400 - 43,000	750 - 3,890
6 + 6 + 6 + 9	6,400	6,400	6,400	9,500		12,600 - 28,500	1,010 - 2,400
	7,700	7,700	7,700	11,500		11,400 - 43,000	750 - 3,890
6 + 6 + 6 + 12	6,300	6,300	6,300	12,600		12,600 - 31,500	1,010 - 2,880
	7,200	7,200	7,200	14,400		11,400 - 43,000	750 - 3,890
6 + 6 + 6 + 15	6,100	6,100	6,100	15,300		12,600 - 33,500	1,010 - 3,220
	6,600	6,600	6,600	16,400		11,400 - 43,000	750 - 3,890
6 + 6 + 6 + 18	5,600	5,600	5,600	16,800		12,600 - 33,500	1,010 - 3,220
	6,000	6,000	6,000	18,000		11,400 - 43,000	750 - 3,890
6 + 6 + 6 + 24	4,800	4,800	4,800	19,200		12,600 - 33,500	1,010 - 3,220
	5,200	5,200	5,200	20,600		11,400 - 43,000	750 - 3,890
6 + 6 + 9 + 9	6,200	6,200	9,300	9,300		12,600 - 31,000	1,010 - 2,800
	7,200	7,200	10,800	10,800		11,400 - 43,000	750 - 3,890
6 + 6 + 9 + 12	6,200	6,200	9,300	12,400		12,600 - 34,000	1,010 - 3,300
	6,600	6,600	9,900	13,100		11,400 - 43,000	750 - 3,890
6 + 6 + 9 + 15	5,900	5,900	8,900	14,800		12,600 - 35,400	1,010 - 3,770
	6,000	6,000	9,000	15,000		11,400 - 43,000	750 - 3,890
6 + 6 + 9 + 18	5,600	5,600	8,400	16,700		12,600 - 36,000	1,010 - 3,830
	5,600	5,600	8,400	16,700		11,400 - 43,000	750 - 3,890
6 + 6 + 9 + 24	5,100	5,100	7,600	20,300		12,600 - 38,000	1,010 - 3,830
	4,800	4,800	7,200	19,200		11,400 - 43,000	750 - 3,890
6 + 6 + 12 + 12	5,900	5,900	11,800	11,800		12,600 - 35,400	1,010 - 3,770
	6,000	6,000	12,000	12,000		11,400 - 43,000	750 - 3,890
6 + 6 + 12 + 15	5,600	5,600	11,100	13,900		12,600 - 36,000	1,010 - 3,830
	5,600	5,600	11,100	13,900		11,400 - 43,000	750 - 3,890
6 + 6 + 12 + 18	5,200	5,200	10,300	15,500		12,600 - 36,000	1,010 - 3,830
	5,200	5,200	10,300	15,500		11,400 - 43,000	750 - 3,890
6 + 6 + 12 + 24	4,800	4,800	9,500	19,000		12,600 - 38,000	1,010 - 3,830
	4,500	4,500	9,000	18,000		11,400 - 43,000	750 - 3,890
6 + 6 + 15 + 15	5,200	5,200	12,900	12,900		12,600 - 36,000	1,010 - 3,830
	5,200	5,200	12,900	12,900		11,400 - 43,000	750 - 3,890
6 + 6 + 15 + 18	4,800	4,800	12,000	14,400		12,600 - 36,000	1,010 - 3,830
	4,800	4,800	12,000	14,400		11,400 - 43,000	750 - 3,890

# MXZ-5B42NA OPERATION PERFORMANCE, contd.

Operation Performance for Indoor Unit Combinations (Unit A + Unit B + Unit C + Unit D + Unit E)	Cooling Capacity Range (Btu/h)					Power Usage Range (W)	
	Heating Capacity Range (Btu/h)						
	Unit A	Unit B	Unit C	Unit D	Unit E	Total Range	
6 + 6 + 15 + 24	4,500	4,500	11,200	17,900		12,600 - 38,000	1,010 - 3,830
	4,300	4,300	10,600	17,000		11,400 - 43,000	750 - 3,890
6 + 6 + 18 + 18	4,500	4,500	13,500	13,500		12,600 - 36,000	1,010 - 3,830
	4,500	4,500	13,500	13,500		11,400 - 43,000	750 - 3,890
6 + 9 + 9 + 9	6,100	9,200	9,200	9,200		12,600 - 33,500	1,010 - 3,220
	6,600	9,900	9,900	9,900		11,400 - 43,000	750 - 3,890
6 + 9 + 9 + 12	5,900	8,900	8,900	11,800		12,600 - 35,400	1,010 - 3,770
	6,000	9,000	9,000	12,000		11,400 - 43,000	750 - 3,890
6 + 9 + 9 + 15	5,600	8,400	8,400	13,900		12,600 - 36,000	1,010 - 3,830
	5,600	8,400	8,400	13,900		11,400 - 43,000	750 - 3,890
6 + 9 + 9 + 18	5,200	7,800	7,800	15,500		12,600 - 36,000	1,010 - 3,830
	5,200	7,800	7,800	15,500		11,400 - 43,000	750 - 3,890
6 + 9 + 9 + 24	4,800	7,200	7,200	19,000		12,600 - 38,000	1,010 - 3,830
	4,500	6,800	6,800	18,000		11,400 - 43,000	750 - 3,890
6 + 9 + 12 + 12	5,600	8,400	11,100	11,100		12,600 - 36,000	1,010 - 3,830
	5,600	8,400	11,100	11,100		11,400 - 43,000	750 - 3,890
6 + 9 + 12 + 15	5,200	7,800	10,300	12,900		12,600 - 36,000	1,010 - 3,830
	5,200	7,800	10,300	12,900		11,400 - 43,000	750 - 3,890
6 + 9 + 12 + 18	4,800	7,200	9,600	14,400		12,600 - 36,000	1,010 - 3,830
	4,800	7,200	9,600	14,400		11,400 - 43,000	750 - 3,890
6 + 9 + 12 + 24	4,500	6,800	9,000	17,900		12,600 - 38,000	1,010 - 3,830
	4,300	6,400	8,500	17,000		11,400 - 43,000	750 - 3,890
6 + 9 + 15 + 15	4,800	7,200	12,000	12,000		12,600 - 36,000	1,010 - 3,830
	4,800	7,200	12,000	12,000		11,400 - 43,000	750 - 3,890
6 + 9 + 15 + 18	4,500	6,800	11,300	13,500		12,600 - 36,000	1,010 - 3,830
	4,500	6,800	11,300	13,500		11,400 - 43,000	750 - 3,890
6 + 9 + 18 + 18	4,300	6,400	12,800	12,800		12,600 - 36,000	1,010 - 3,830
	4,300	6,400	12,800	12,800		11,400 - 43,000	750 - 3,890
6 + 12 + 12 + 12	5,200	10,300	10,300	10,300		12,600 - 36,000	1,010 - 3,830
	5,200	10,300	10,300	10,300		11,400 - 43,000	750 - 3,890
6 + 12 + 12 + 15	4,800	9,600	9,600	12,000		12,600 - 36,000	1,010 - 3,830
	4,800	9,600	9,600	12,000		11,400 - 43,000	750 - 3,890
6 + 12 + 12 + 18	4,500	9,000	9,000	13,500		12,600 - 36,000	1,010 - 3,830
	4,500	9,000	9,000	13,500		11,400 - 43,000	750 - 3,890
6 + 12 + 15 + 15	4,500	9,000	11,300	11,300		12,600 - 36,000	1,010 - 3,830
	4,500	9,000	11,300	11,300		11,400 - 43,000	750 - 3,890
6 + 12 + 15 + 18	4,300	8,500	10,600	12,800		12,600 - 36,000	1,010 - 3,830
	4,300	8,500	10,600	12,800		11,400 - 43,000	750 - 3,890
6 + 15 + 15 + 15	4,300	10,600	10,600	10,600		12,600 - 36,000	1,010 - 3,830
	4,300	10,600	10,600	10,600		11,400 - 43,000	750 - 3,890
9 + 9 + 9 + 9	8,900	8,900	8,900	8,900		12,600 - 35,400	1,010 - 3,770
	9,000	9,000	9,000	9,000		11,400 - 43,000	750 - 3,890
9 + 9 + 9 + 12	8,400	8,400	8,400	11,100		12,600 - 36,000	1,010 - 3,830
	8,400	8,400	8,400	11,100		11,400 - 43,000	750 - 3,890
9 + 9 + 9 + 15	7,800	7,800	7,800	12,900		12,600 - 36,000	1,010 - 3,830
	7,800	7,800	7,800	12,900		11,400 - 43,000	750 - 3,890
9 + 9 + 9 + 18	7,200	7,200	7,200	14,400		12,600 - 36,000	1,010 - 3,830
	7,200	7,200	7,200	14,400		11,400 - 43,000	750 - 3,890
9 + 9 + 9 + 24	6,800	6,800	6,800	17,900		12,600 - 38,000	1,010 - 3,830
	6,400	6,400	6,400	17,000		11,400 - 43,000	750 - 3,890
9 + 9 + 12 + 12	7,800	7,800	10,300	10,300		12,600 - 36,000	1,010 - 3,830
	7,800	7,800	10,300	10,300		11,400 - 43,000	750 - 3,890
9 + 9 + 12 + 15	7,200	7,200	9,600	12,000		12,600 - 36,000	1,010 - 3,830
	7,200	7,200	9,600	12,000		11,400 - 43,000	750 - 3,890
9 + 9 + 12 + 18	6,800	6,800	9,000	13,500		12,600 - 36,000	1010 - 3,870
	6,800	6,800	9,000	13,500		11,400 - 43,000	750 - 3,890
9 + 9 + 15 + 15	6,800	6,800	11,300	11,300		12,600 - 36,000	1,010 - 3,830
	6,800	6,800	11,300	11,300		11,400 - 43,000	750 - 3,890
9 + 9 + 15 + 18	6,400	6,400	10,600	12,800		12,600 - 36,000	1,010 - 3,870
	6,400	6,400	10,600	12,800		11,400 - 43,000	750 - 3,890

# MXZ-5B42NA OPERATION PERFORMANCE, contd.

Operation Performance for Indoor Unit Combinations (Unit A + Unit B + Unit C + Unit D + Unit E)	Cooling Capacity Range (Btu/h)					Power Usage Range (W)	
	Heating Capacity Range (Btu/h)						
	Unit A	Unit B	Unit C	Unit D	Unit E		Total Range
9 + 12 + 12 + 12	7,200	9,600	9,600	9,600		12,600 - 36,000	1,010 - 3,830
	7,200	9,600	9,600	9,600		11,400 - 43,000	750 - 3,890
9 + 12 + 12 + 15	6,800	9,000	9,000	11,300		12,600 - 36,000	1,010 - 3,870
	6,800	9,000	9,000	11,300		11,400 - 43,000	750 - 3,890
9 + 12 + 12 + 18	6,400	8,500	8,500	12,800		12,600 - 36,000	1,010 - 3,870
	6,400	8,500	8,500	12,800		11,400 - 43,000	750 - 3,890
9 + 12 + 15 + 15	6,400	8,500	10,600	10,600		12,600 - 36,000	1,010 - 3,870
	6,400	8,500	10,600	10,600		11,400 - 43,000	750 - 3,890
12 + 12 + 12 + 12	9,000	9,000	9,000	9,000		12,600 - 36,000	1,010 - 3,870
	9,000	9,000	9,000	9,000		11,400 - 43,000	750 - 3,890
12 + 12 + 12 + 15	8,500	8,500	8,500	10,600		12,600 - 36,000	1,010 - 3,870
	8,500	8,500	8,500	10,600		11,400 - 43,000	750 - 3,890
6 + 6 + 6 + 6 + 6	6,200	6,200	6,200	6,200	6,200	12,600 - 31,000	1,010 - 3,850
	7,600	7,600	7,600	7,600	7,600	11,400 - 48,000	750 - 4,500
6 + 6 + 6 + 6 + 9	6,100	6,100	6,100	6,100	9,200	12,600 - 33,500	1,010 - 4,000
	7,200	7,200	7,200	7,200	10,800	11,400 - 49,500	750 - 4,650
6 + 6 + 6 + 6 + 12	6,400	6,400	6,400	6,400	12,700	12,600 - 38,000	1,010 - 4,500
	6,900	6,900	6,900	6,900	13,800	11,400 - 50,500	750 - 4,750
6 + 6 + 6 + 6 + 15	6,000	6,000	6,000	6,000	15,000	12,600 - 39,000	1,010 - 4,400
	6,600	6,600	6,600	6,600	16,400	11,400 - 53,600	750 - 5,100
6 + 6 + 6 + 6 + 18	5,900	5,900	5,900	5,900	17,600	12,600 - 41,000	1,010 - 4,800
	6,500	6,500	6,500	6,500	19,400	11,400 - 53,600	750 - 5,100
6 + 6 + 6 + 6 + 24	5,200	5,200	5,200	5,200	20,800	12,600 - 41,500	1,010 - 4,850
	5,800	5,800	5,800	5,800	23,000	11,400 - 53,600	750 - 5,100
6 + 6 + 6 + 9 + 9	6,400	6,400	6,400	9,500	9,500	12,600 - 38,000	1,010 - 4,500
	6,900	6,900	6,900	10,300	10,300	11,400 - 53,600	750 - 5,100
6 + 6 + 6 + 9 + 12	6,300	6,300	6,300	9,400	12,500	12,600 - 40,500	1,010 - 4,600
	6,600	6,600	6,600	9,900	13,100	11,400 - 53,600	750 - 5,100
6 + 6 + 6 + 9 + 15	5,900	5,900	5,900	8,800	14,700	12,600 - 41,000	1,010 - 4,800
	6,500	6,500	6,500	9,700	16,200	11,400 - 53,600	750 - 5,100
6 + 6 + 6 + 9 + 18	5,600	5,600	5,600	8,300	16,600	12,600 - 41,500	1,010 - 4,900
	6,100	6,100	6,100	9,100	18,200	11,400 - 53,600	750 - 5,100
6 + 6 + 6 + 9 + 24	4,900	4,900	4,900	7,400	19,600	12,600 - 41,500	1,010 - 4,750
	5,500	5,500	5,500	8,200	21,700	11,400 - 53,600	750 - 5,100
6 + 6 + 6 + 12 + 12	5,900	5,900	5,900	11,800	11,800	12,600 - 41,000	1,010 - 4,800
	6,500	6,500	6,500	13,000	13,000	11,400 - 53,600	750 - 5,100
6 + 6 + 6 + 12 + 15	5,600	5,600	5,600	11,100	13,900	12,600 - 41,500	1,010 - 4,900
	6,100	6,100	6,100	12,200	15,200	11,400 - 53,600	750 - 5,100
6 + 6 + 6 + 12 + 18	5,200	5,200	5,200	10,400	15,600	12,600 - 41,500	1,010 - 4,850
	5,700	5,700	5,700	11,400	17,100	11,400 - 53,600	750 - 5,100
6 + 6 + 6 + 15 + 15	5,200	5,200	5,200	13,000	13,000	12,600 - 41,500	1,010 - 4,850
	5,800	5,800	5,800	14,400	14,400	11,400 - 53,600	750 - 5,100
6 + 6 + 6 + 15 + 18	4,900	4,900	4,900	12,300	14,700	12,600 - 41,500	1,010 - 4,750
	5,500	5,500	5,500	13,600	16,300	11,400 - 53,600	750 - 5,100
6 + 6 + 9 + 9 + 9	6,300	6,300	9,400	9,400	9,400	12,600 - 40,500	1,010 - 4,850
	6,600	6,600	9,900	9,900	9,900	11,400 - 53,600	750 - 5,100
6 + 6 + 9 + 9 + 12	5,900	5,900	8,800	8,800	11,800	12,600 - 41,000	1,010 - 4,800
	6,500	6,500	9,700	9,700	13,000	11,400 - 53,600	750 - 5,100
6 + 6 + 9 + 9 + 15	5,600	5,600	8,300	8,300	13,900	12,600 - 41,500	1,010 - 4,900
	6,100	6,100	9,100	9,100	15,200	11,400 - 53,600	750 - 5,100
6 + 6 + 9 + 9 + 18	5,200	5,200	7,800	7,800	15,600	12,600 - 41,500	1,010 - 4,850
	5,800	5,800	8,700	8,700	17,300	11,400 - 53,600	750 - 5,100
6 + 6 + 9 + 12 + 12	5,600	5,600	8,300	11,100	11,100	12,600 - 41,500	1,010 - 4,900
	6,100	6,100	9,100	12,200	12,200	11,400 - 53,600	750 - 5,100
6 + 6 + 9 + 12 + 15	5,200	5,200	7,800	10,400	13,000	12,600 - 41,500	1,010 - 4,850
	5,800	5,800	8,700	11,500	14,400	11,400 - 53,600	750 - 5,100
6 + 6 + 9 + 12 + 18	4,900	4,900	7,400	9,800	14,700	12,600 - 41,500	1,010 - 4,750
	5,500	5,500	8,200	10,900	16,300	11,400 - 53,600	750 - 5,100
6 + 6 + 9 + 15 + 15	5,100	5,100	7,600	12,600	12,600	12,600 - 42,600	1,010 - 4,750
	5,500	5,500	8,200	13,600	13,600	11,400 - 53,600	750 - 5,100



## MXZ-5B42NA OPERATION PERFORMANCE, contd.

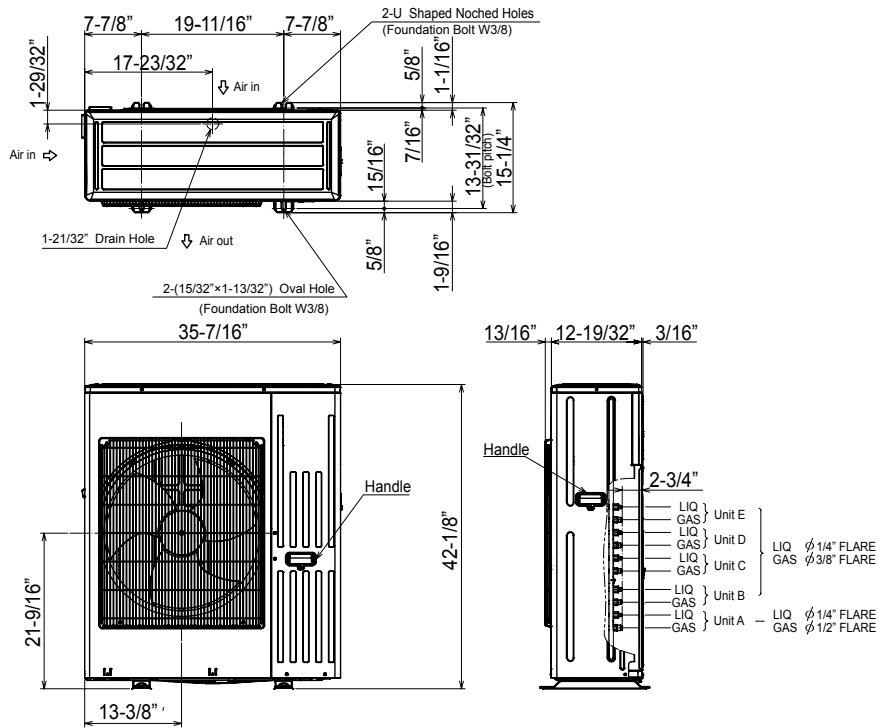
Operation Performance for Indoor Unit Combinations (Unit A + Unit B + Unit C + Unit D + Unit E)	Cooling Capacity Range (Btu/h)						Power Usage Range (W)
	Heating Capacity Range (Btu/h)						
	Unit A	Unit B	Unit C	Unit D	Unit E	Total Range	
6 + 6 + 12 + 12 + 12	5,200	5,200	10,400	10,400	10,400	12,600 - 41,500	1,010 - 4,850
	5,800	5,800	11,500	11,500	11,500	11,400 - 53,600	750 - 5,100
6 + 6 + 12 + 12 + 15	4,900	4,900	9,800	9,800	12,300	12,600 - 41,500	1,010 - 4,750
	5,500	5,500	10,900	10,900	13,600	11,400 - 53,600	750 - 5,100
6 + 9 + 9 + 9 + 9	5,800	8,750	8,750	8,750	8,750	12,600 - 43,000	1,010 - 4,800
	6,400	9,700	9,700	9,700	9,700	11,400 - 53,600	750 - 5,100
6 + 9 + 9 + 9 + 12	5,600	8,300	8,300	8,300	11,100	12,600 - 41,500	1,010 - 4,900
	6,100	9,100	9,100	9,100	12,100	11,400 - 53,600	750 - 5,100
6 + 9 + 9 + 9 + 15	5,200	7,800	7,800	7,800	13,000	12,600 - 41,500	1,010 - 4,850
	5,800	8,700	8,700	8,700	14,400	11,400 - 53,600	750 - 5,100
6 + 9 + 9 + 9 + 18	4,900	7,400	7,400	7,400	14,700	12,600 - 41,500	1,010 - 4,750
	5,500	8,200	8,200	8,200	16,300	11,400 - 53,600	750 - 5,100
6 + 9 + 9 + 12 + 12	5,200	7,800	7,800	10,400	10,400	12,600 - 41,500	1,010 - 4,850
	5,800	8,700	8,700	11,500	11,500	11,400 - 53,600	750 - 5,100
6 + 9 + 9 + 12 + 15	4,900	7,400	7,400	9,800	12,300	12,600 - 41,500	1,010 - 4,750
	5,500	8,200	8,200	10,900	13,600	11,400 - 53,600	750 - 5,100
6 + 9 + 12 + 12 + 12	4,900	7,400	9,800	9,800	9,800	12,600 - 41,500	1,010 - 4,750
	5,500	8,200	10,900	10,900	10,900	11,400 - 53,600	750 - 5,100
9 + 9 + 9 + 9 + 9	8,300	8,300	8,300	8,300	8,300	12,600 - 41,500	1,010 - 4,900
	9,100	9,100	9,100	9,100	9,100	11,400 - 53,600	750 - 5,100
9 + 9 + 9 + 9 + 12	7,800	7,800	7,800	7,800	10,400	12,600 - 41,500	1,010 - 4,850
	8,700	8,700	8,700	8,700	11,500	11,400 - 53,600	750 - 5,100
9 + 9 + 9 + 9 + 15	7,400	7,400	7,400	7,400	12,300	12,600 - 41,500	1,010 - 4,750
	8,200	8,200	8,200	8,200	13,600	11,400 - 53,600	750 - 5,100
9 + 9 + 9 + 12 + 12	7,400	7,400	7,400	9,800	9,800	12,600 - 41,500	1,010 - 4,750
	8,200	8,200	8,200	10,900	10,900	11,400 - 53,600	750 - 5,100



# DIMENSIONS: MXZ-5B42NA

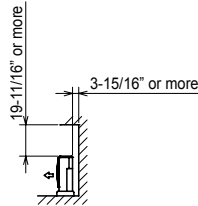
**MXZ-5B42NA**

**Unit: inch**

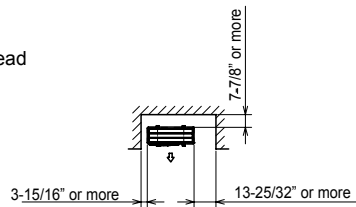


**1. Installation space**

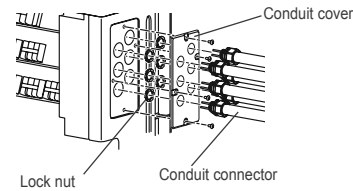
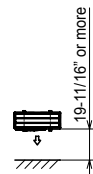
Note : Leave front and both sides free of obstruction.



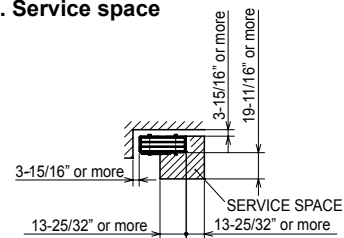
Note : Leave front and overhead free of obstruction.



Note : Leave rear, overhead and both sides free of obstruction.



**2. Service space**



**Intertek**



1340 Satellite Boulevard  
 Suwanee, GA 30024  
 Tele: 678-376-2900 • Fax: 800-889-9904  
 Toll Free: 800-433-4822  
 www.mehvac.com